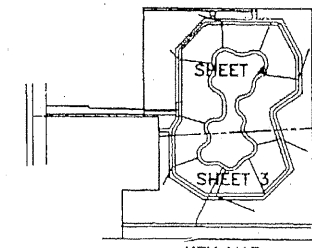
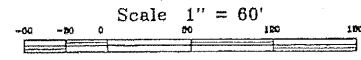


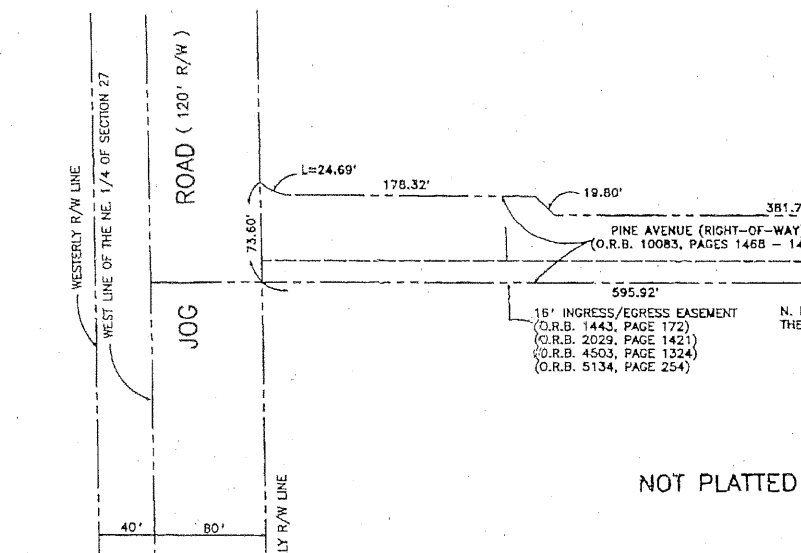
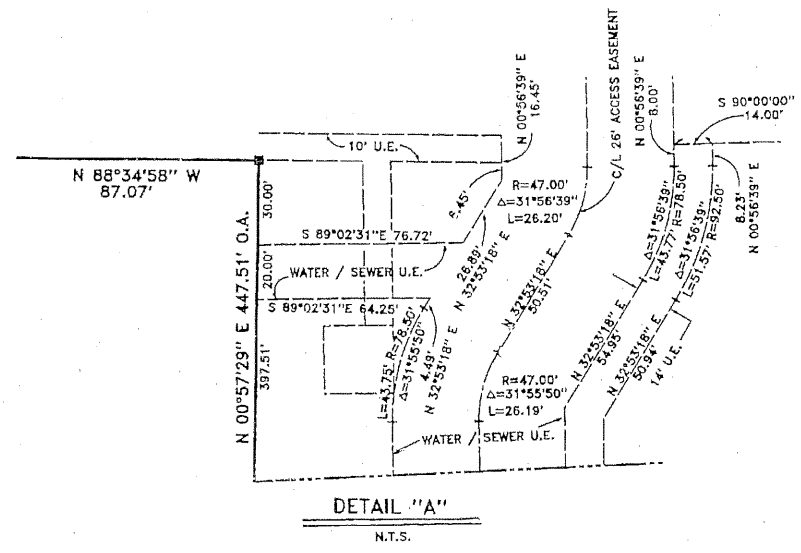
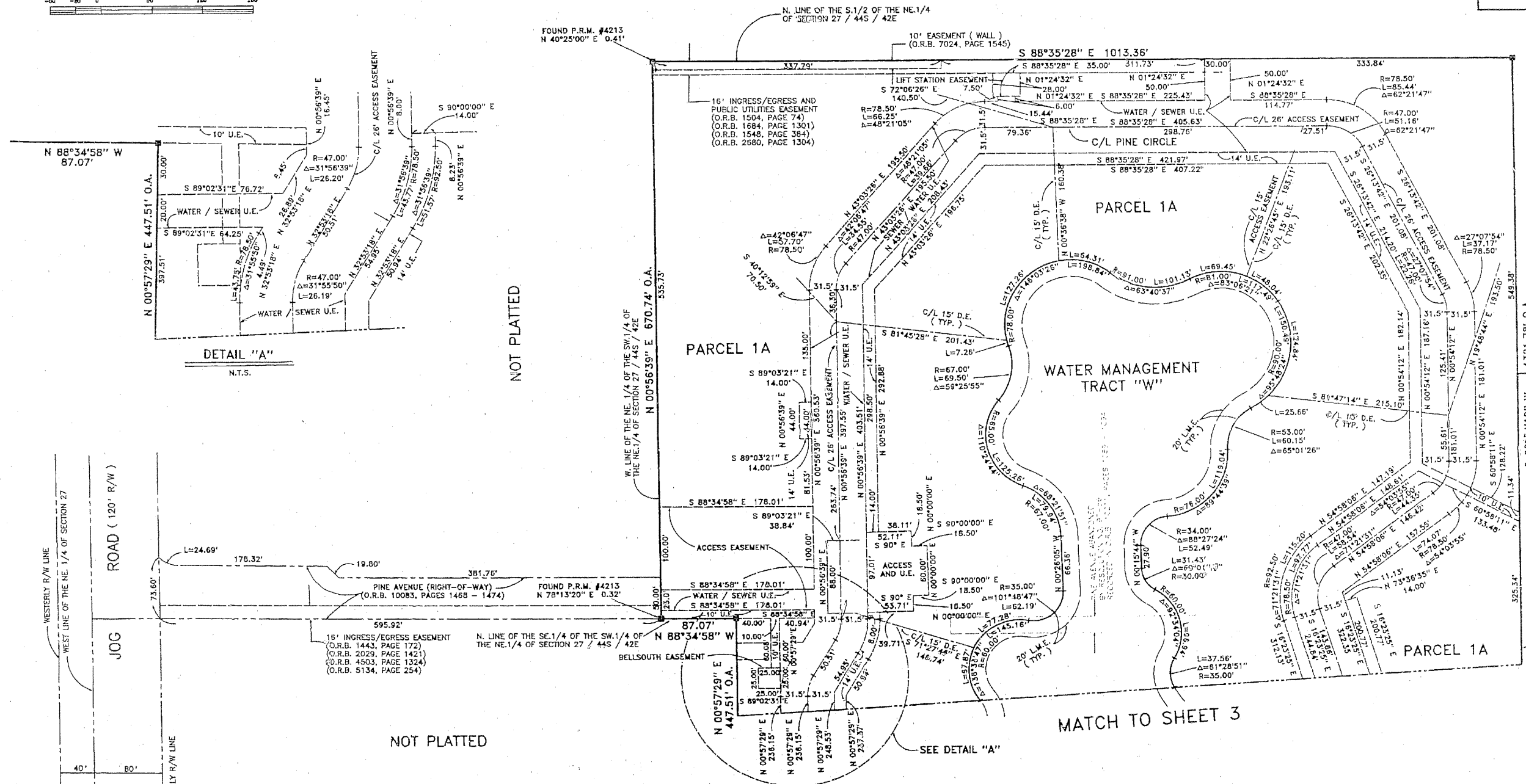
PLAT OF  
**CHELSEA COMMONS**  
LYING IN SECTION 27, TOWNSHIP 44 SOUTH, RANGE 42 EAST,  
CITY OF GREENACRES, PALM BEACH COUNTY, FLORIDA.  
SHEET 4 OF 4  
FEBRUARY, 1998



STATE OF FLORIDA  
COUNTY OF PALM BEACH  
This Plat was filed for record on \_\_\_\_\_  
M. This \_\_\_\_\_ day of \_\_\_\_\_, 19\_\_\_\_  
and duly recorded in Plat Book No. \_\_\_\_\_  
on Page \_\_\_\_\_  
Dorothy H. Wilken, Clerk of the Circuit Court  
By \_\_\_\_\_ D.C.



NOT PLATTED



NOT PLATTED

SHERWOOD LAKES ( P.U.D. ) PLAT NO. 2  
( PLAT BOOK 41, PAGES 134 - 136 )

**Landmark Surveying & Mapping Inc.**  
1850 FOREST HILL BOULEVARD  
PH. (561)433-5405 SUITE 100 W.P.B. FLORIDA

PLAT OF  
**CHELSEA COMMONS**